

OSRAM LED DRIVERS CATALOGUE

Contact Us:

Tel: +86 757 8625 6767

Email: osram-led-drivers@eaglerise.com

Website: <https://lighting.eaglerise.com/osram-drivers>

Service contact:

Eaglerise Electric & Electronic (JI AN) Co., Ltd.

Website: <https://lighting.eaglerise.com>

Eaglerise is a licensee of the OSRAM brand for LED drivers.

OSRAM is a trademark of OSRAM GmbH.

OSRAM LED Drivers Catalogue
2026

V2026.06



LinkedIn



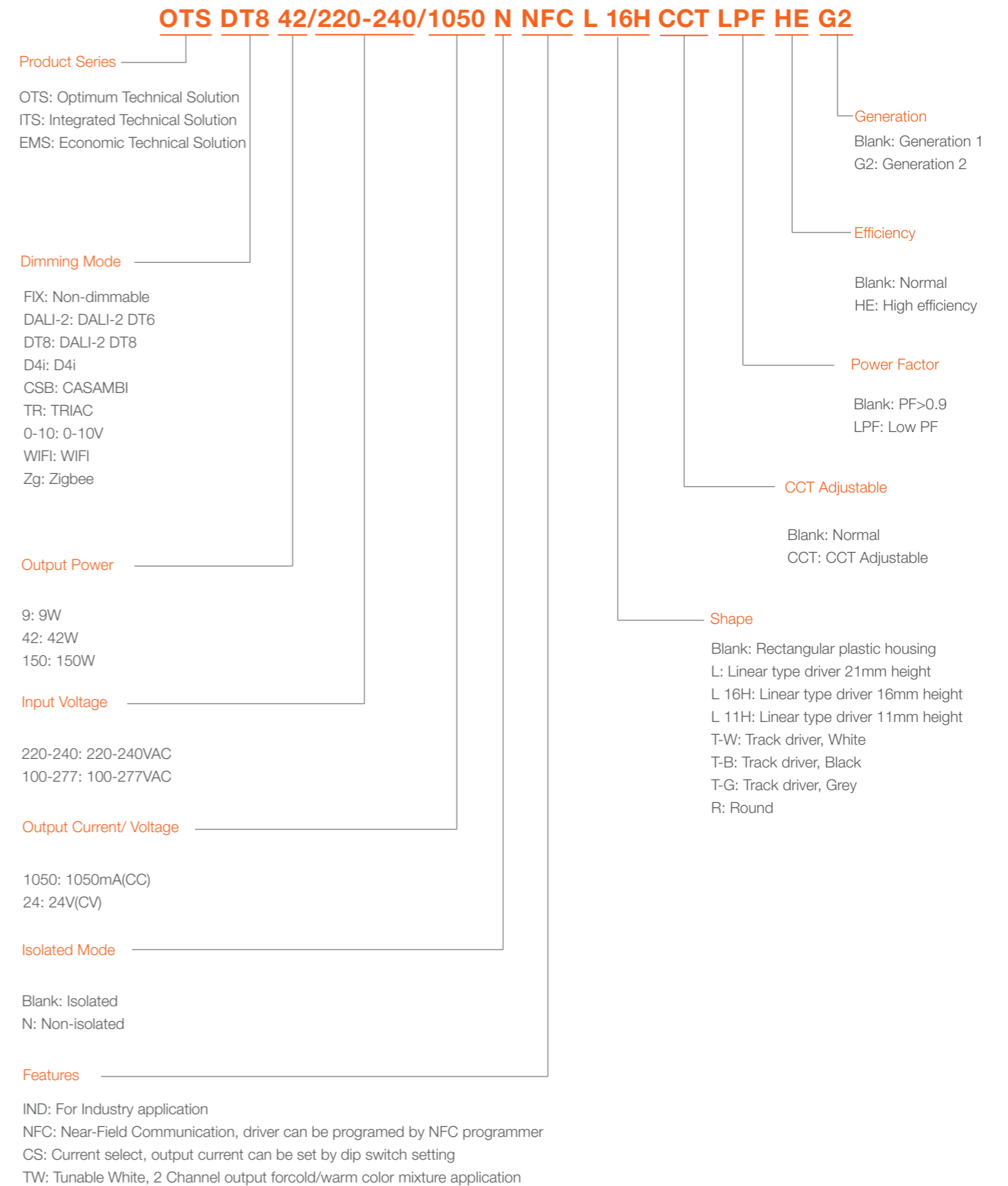
Facebook

OSRAM
LED Drivers

Contents

Naming Rules	2
Product Overview	3
ITS DALI-2 CS Series	5
ITS FIX CS Series	6
ITS FIX TRACK HE Series	7
ITS FIX Linear Series	8
ITS FIX CV Series	9
EMS High PF Series	10
EMS LPF Series	12
Accessories	13

Naming Rules



Product Overview

ITS DALI-2 CS Series

Model	Item NO.	Power	Input Voltage	Output Current	Output Voltage	Efficiency	Power Factor	Size (L*W*H)
ITS DALI-2 15/220-240/350 CS	61102019	15W	220-240VAC	100-350mA	9-42V	85%	0.95	130*29*21mm
ITS DALI-2 20/220-240/500 CS	61102029	20W	220-240VAC	150-500mA	10-45V	87%	0.95	97*43*25mm
ITS DALI-2 30/220-240/700 CS	61102039	30W	220-240VAC	350-700mA	10-45V	90%	0.95	97*43*25mm
ITS DALI-2 42/220-240/1050 CS	61102049	42W	220-240VAC	700-1050mA	10-45V	90%	0.95	97*43*25mm
ITS DALI-2 60/220-240/1500 CS	61102059	60W	220-240VAC	800-1500mA	15-48V	90%	0.95	113*43*25mm



Page 05

ITS FIX CS Series

Model	Item NO.	Power	Input Voltage	Output Current	Output Voltage	Efficiency	Power Factor	Size (L*W*H)
ITS FIX 20/220-240/500 CS	61101019	20W	220-240VAC	150-500mA	23-42V	88%	0.95	97*43*25mm
ITS FIX 30/220-240/700 CS	61101029	30W	220-240VAC	350-700mA	23-42V	88%	0.95	97*43*25mm
ITS FIX 42/220-240/1050 CS	61101039	42W	220-240VAC	700-1050mA	23-42V	90%	0.95	97*43*25mm
ITS FIX 60/220-240/1500 CS	61101049	60W	220-240VAC	800-1500mA	23-42V	90%	0.95	113*43*25mm



Page 06

ITS FIX TRACK HE Series

Model	Item NO.	Power	Input Voltage	Output Current	Output Voltage	Efficiency	Power Factor	Size (L*W*H)
ITS FIX 12/220-240/300 CS T-W HE	(W) 61303019							
ITS FIX 12/220-240/300 CS T-B HE	(B) 61303018	12W	220-240VAC	150-300mA	27-40V	92%	0.95	133*31*42mm
ITS FIX 12/220-240/300 CS T-G HE	(G) 61303017							
ITS FIX 18/220-240/450 CS T-W HE	(W) 61303029							
ITS FIX 18/220-240/450 CS T-B HE	(B) 61303028	18W	220-240VAC	300-450mA	27-40V	92%	0.95	133*31*42mm
ITS FIX 18/220-240/450 CS T-G HE	(G) 61303027							
ITS FIX 28/220-240/650 CS T-W HE	(W) 61303039							
ITS FIX 28/220-240/650 CS T-B HE	(B) 61303038	28W	220-240VAC	500-650mA	27-40V	92%	0.95	133*31*42mm
ITS FIX 28/220-240/650 CS T-G HE	(G) 61303037							
ITS FIX 36/220-240/850 CS T-W HE	(W) 61303049							
ITS FIX 36/220-240/850 CS T-B HE	(B) 61303048	36W	220-240VAC	700-850mA	27-40V	93%	0.95	133*31*42mm
ITS FIX 36/220-240/850 CS T-G HE	(G) 61303047							
ITS FIX 42/220-240/1050 CS T-W HE	(W) 61303059							
ITS FIX 42/220-240/1050 CS T-B HE	(B) 61303058	42W	220-240VAC	900-1050mA	27-40V	93%	0.95	133*31*42mm
ITS FIX 42/220-240/1050 CS T-G HE	(G) 61303057							



Page 07

ITS FIX Linear Series

Model	Item NO.	Power	Input Voltage	Output Current	Output Voltage	Efficiency	Power Factor	Size (L*W*H)
ITS FIX 20/220-240/350 N CS L	61204019	20W	220-240VAC	200-350mA	25-100V	90%	0.9	168*30*21mm
ITS FIX 40/220-240/350 N CS L	61204029	40W	220-240VAC	200-350mA	40-200V	94%	0.95	168*30*21mm
ITS FIX 60/220-240/350 N CS L	61204039	60W	220-240VAC	200-350mA	90-200V	94%	0.95	210*30*21mm
ITS FIX 80/220-240/550 N CS L	61204049	80W	220-240VAC	200-550mA	90-216V	95%	0.95	210*30*21mm



Page 08

ITS FIX Linear CCT Series

Model	Item NO.	Power	Input Voltage	Output Current	Output Voltage	Efficiency	Power Factor	Size (L*W*H)
ITS FIX 20/220-240/350 N CS L CCT	61204079	20W	220-240VAC	200-350mA	25-100V	90%	0.9	168*30*21mm
ITS FIX 40/220-240/350 N CS L CCT	61204089	40W	220-240VAC	200-350mA	40-200V	94%	0.95	168*30*21mm
ITS FIX 60/220-240/350 N CS L CCT	61204099	60W	220-240VAC	200-350mA	90-200V	94%	0.95	210*30*21mm
ITS FIX 80/220-240/550 N CS L CCT	61204109	80W	220-240VAC	200-550mA	90-216V	95%	0.95	210*30*21mm



Page 09

ITS FIX CV Series

Model	Item NO.	Power	Input Voltage	Output Current	Output Voltage	Efficiency	Power Factor	Size (L*W*H)
ITS FIX 30/220-240/12	62105019	30W	220-240VAC	0-2.5A	12V	85%	0.95	168*39*28mm
ITS FIX 30/220-240/24	62105029	30W	220-240VAC	0-1.25A	24V	85%	0.95	168*39*28mm
ITS FIX 60/220-240/12	62105039	60W	220-240VAC	0-5A	12V	89%	0.95	200*39*30mm
ITS FIX 60/220-240/24	62105049	60W	220-240VAC	0-2.5A	24V	89%	0.95	200*39*30mm
ITS FIX 120/220-240/12	62105059	120W	220-240VAC	0-10A	12V	91%	0.95	259*39*30mm
ITS FIX 120/220-240/24	62105069	120W	220-240VAC	0-5A	24V	93%	0.95	259*39*30mm
ITS FIX 180/220-240/24	62105079	180W	220-240VAC	0-7.5A	24V	93%	0.95	350*45*30mm
ITS FIX 250/220-240/24	62105089	250W	220-240VAC	0-10.416A	24V	93%	0.95	350*45*30mm



Page 10

EMS High PF Series

Model	Item NO.	Power	Input Voltage	Output Current	Output Voltage	Efficiency	Power Factor	Size (L*W*H)
EMS 20/220-240/500	61106019	20W	220-240VAC	500mA	27-42V	87%	0.95	103*43*29mm
EMS 25/220-240/600	61106029	25W	220-240VAC	600mA	27-42V	87%	0.95	103*43*29mm
EMS 30/220-240/700	61106039	30W	220-240VAC	700mA	27-42V	87%	0.95	103*43*29mm
EMS 32/220-240/750	61106049	32W	220-240VAC	750mA	27-42V	87%	0.95	103*43*29mm
EMS 33/220-240/800	61106059	33W	220-240VAC	800mA	27-42V	89%	0.95	103*43*29mm
EMS 35/220-240/850	61106069	35W	220-240VAC	850mA	27-42V	89%	0.95	103*43*29mm
EMS 36/220-240/900	61106079	36W	220-240VAC	900mA	27-42V	89%	0.95	103*43*29mm
EMS 38/220-240/950	61106089	38W	220-240VAC	950mA	27-42V	89%	0.95	103*43*29mm
EMS 40/220-240/1000	61106099	40W	220-240VAC	1000mA	27-42V	89%	0.95	103*43*29mm
EMS 42/220-240/1050	61106109	42W	220-240VAC	1050mA	27-40V	90%	0.95	103*43*29mm



Page 11

EMS LPF Series

Model	Item NO.	Power	Input Voltage	Output Current	Output Voltage	Efficiency	Power Factor	Size (L*W*H)
EMS 5/220-240/120 LPF	61107029	5W	220-240VAC	120mA	30-40V	80%	0.6	92*28*21mm
EMS 6/220-240/150 LPF	61107039	6W	220-240VAC	150mA	30-40V	80%	0.6	92*28*21mm
EMS 7/220-240/180 LPF	61107049	7W	220-240VAC	180mA	30-40V	80%	0.6	92*28*21mm
EMS 8/220-240/200 LPF	61107059	8W	220-240VAC	200mA	30-40V	80%	0.6	92*28*21mm
EMS 9/220-240/220 LPF	61107069	9W	220-240VAC	220mA	30-40V	80%	0.6	92*28*21mm
EMS 10/220-240/250 LPF	61107079	10W	220-240VAC	250mA	30-40V	82%	0.6	92*28*21mm
EMS 11/220-240/280 LPF	61107089	11W	220-240VAC	280mA	30-40V	82%	0.6	92*28*21mm
EMS 12/220-240/300 LPF	61107099	12W	220-240VAC	300mA	30-40V	82%	0.6	92*28*21mm
EMS 15/220-240/350 LPF	61107109	15W	220-240VAC	350mA	30-40V	82%	0.6	92*28*21mm
EMS 18/220-240/450 LPF	61107119	18W	220-240VAC	450mA	30-40V	85%	0.55	92*36*25mm
EMS 20/220-240/500 LPF	61107129	20W	220-240VAC	500mA	30-40V	85%	0.55	92*36*25mm



Page 12

ITS DALI-2 CS Series

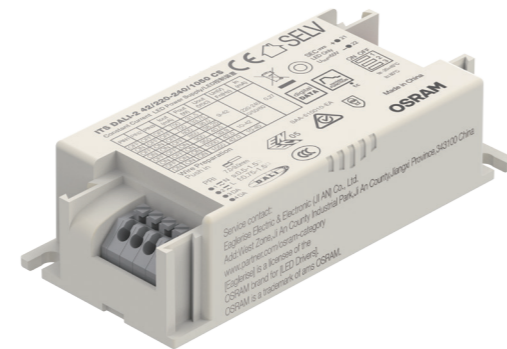
- For luminaire of protection class I or II
- Isolated / SELV / Built-in / Independent (With side caps)
- Input Voltage 220-240 VAC
- Protections: SCP/ OLP/ OVP/ OTP
- CLO Integrated
- Efficiency up to 90%
- Adjustable output current with DIP-switch
- Suitable for emergency lighting acc. to EN 50172
- EOFi=15%
- 5 years warranty
- Ta: 50°C
- DALI maintainace (Parts 251, 252, 253)
- 3m/ 10m EMI
- 25mm height
- Surge: 2kV



35mm Aperture



*15W



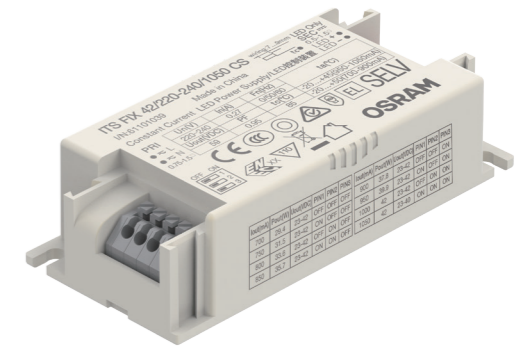
Item NO. 63101019



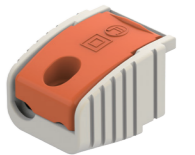
Model	Item NO.	Power	Input Voltage	Output Current	Output Voltage	Efficiency	Power Factor	Size (L*W*H)
ITS DALI-2 15/220-240/350 CS	61102019	15W	220-240VAC	100-350mA	9-42V	85%	0.95	130*29*21mm
ITS DALI-2 20/220-240/500 CS	61102029	20W	220-240VAC	150-500mA	10-45V	87%	0.95	97*43*25mm
ITS DALI-2 30/220-240/700 CS	61102039	30W	220-240VAC	350-700mA	10-45V	90%	0.95	97*43*25mm
ITS DALI-2 42/220-240/1050 CS	61102049	42W	220-240VAC	700-1050mA	10-45V	90%	0.95	97*43*25mm
ITS DALI-2 60/220-240/1500 CS	61102059	60W	220-240VAC	800-1500mA	15-48V	90%	0.95	113*43*25mm

ITS FIX CS Series

- For luminaire of protection class I or II
- Isolated / SELV / Built-in / Independent (With side caps)
- Input Voltage 220-240 VAC
- Protections: SCP/ OLP/ OVP/ OTP
- Efficiency up to 90%
- Adjustable output current with DIP-switch
- Suitable for emergency lighting acc. to EN 50172
- EOFi=100%
- 5 years warranty
- Ta: 50°C
- Surge: 2kV
- 3m/ 10m EMI
- 25mm height



Item NO. 63101019



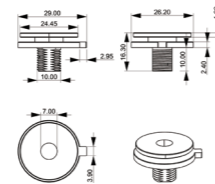
Model	Item NO.	Power	Input Voltage	Output Current	Output Voltage	Efficiency	Power Factor	Size (L*W*H)
ITS FIX 20/220-240/500 CS	61101019	20W	220-240VAC	150-500mA	23-42V	88%	0.95	97*43*25mm
ITS FIX 30/220-240/700 CS	61101029	30W	220-240VAC	350-700mA	23-42V	88%	0.95	97*43*25mm
ITS FIX 42/220-240/1050 CS	61101039	42W	220-240VAC	700-1050mA	23-42V	90%	0.95	97*43*25mm
ITS FIX 60/220-240/1500 CS	61101049	60W	220-240VAC	800-1500mA	23-42V	90%	0.95	113*43*25mm

ITS FIX TRACK HE Series

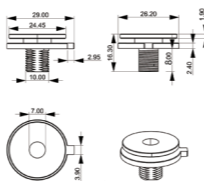
- For luminaire of protection class II
- Isolated / SELV / Independent
- Input Voltage 220-240 VAC
- Protections: SCP/ OLP/ OVP/ OTP
- Available in black, white and grey
- Power Factor 0.95
- Efficiency up to 93%
- Adjustable output current with DIP-switch
- Suitable for emergency lighting acc. to EN 50172
- EOFi=100%
- 5 years warranty
- Surge: 2kV
- Mini size: 133mm length
- Tc: 75°C



Item NO. 63301019



Item NO. 63301029



Model	Item NO.	Power	Input Voltage	Output Current	Output Voltage	Efficiency	Power Factor	Size (L*W*H)
ITS FIX 12/220-240/300 CS T-W HE	(W) 61303019	12W	220-240VAC	150-300mA	27-40V	92%	0.95	133*31*42mm
ITS FIX 12/220-240/300 CS T-B HE	(B) 61303018							
ITS FIX 12/220-240/300 CS T-G HE	(G) 61303017							
ITS FIX 18/220-240/450 CS T-W HE	(W) 61303029	18W	220-240VAC	300-450mA	27-40V	92%	0.95	133*31*42mm
ITS FIX 18/220-240/450 CS T-B HE	(B) 61303028							
ITS FIX 18/220-240/450 CS T-G HE	(G) 61303027							
ITS FIX 28/220-240/650 CS T-W HE	(W) 61303039	28W	220-240VAC	500-650mA	27-40V	92%	0.95	133*31*42mm
ITS FIX 28/220-240/650 CS T-B HE	(B) 61303038							
ITS FIX 28/220-240/650 CS T-G HE	(G) 61303037							
ITS FIX 36/220-240/850 CS T-W HE	(W) 61303049	36W	220-240VAC	700-850mA	27-40V	93%	0.95	133*31*42mm
ITS FIX 36/220-240/850 CS T-B HE	(B) 61303048							
ITS FIX 36/220-240/850 CS T-G HE	(G) 61303047							
ITS FIX 42/220-240/1050 CS T-W HE	(W) 61303059	42W	220-240VAC	900-1050mA	27-40V	93%	0.95	133*31*42mm
ITS FIX 42/220-240/1050 CS T-B HE	(B) 61303058							
ITS FIX 42/220-240/1050 CS T-G HE	(G) 61303057							

ITS FIX Linear Series

- For luminaire of protection class I
- Non-Isolated / Built-in
- Input Voltage 220-240 VAC
- Protections: SCP/ OLP/ OVP/ OTP
- Power Factor 0.95
- Efficiency up to 95%
- Adjustable output current with DIP-switch
- Suitable for emergency lighting acc. to EN 50172
- EOFi=100%
- 5 years warranty
- Surge: 2kV
- Tc: 85°C



Model	Item NO.	Power	Input Voltage	Output Current	Output Voltage	Efficiency	Power Factor	Size (L*W*H)
ITS FIX 20/220-240/350 N CS L	61204019	20W	220-240VAC	200-350mA	25-100V	90%	0.9	168*30*21mm
ITS FIX 40/220-240/350 N CS L	61204029	40W	220-240VAC	200-350mA	40-200V	94%	0.95	168*30*21mm
ITS FIX 60/220-240/350 N CS L	61204039	60W	220-240VAC	200-350mA	90-200V	94%	0.95	210*30*21mm
ITS FIX 80/220-240/550 N CS L	61204049	80W	220-240VAC	200-550mA	90-216V	95%	0.95	210*30*21mm

ITS FIX Linear CCT Series

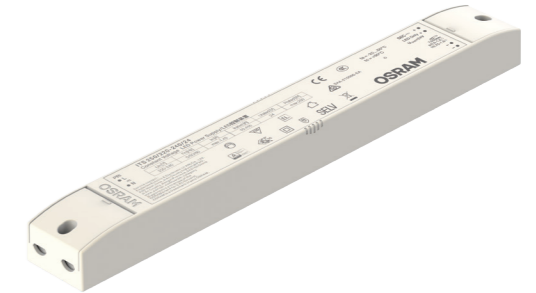
- For luminaire of protection class I
- Non-Isolated / Built-in
- Input Voltage 220-240 VAC
- Protections: SCP/ OLP/ OVP/ OTP
- Power Factor 0.95
- Efficiency up to 95%
- Adjustable output current with DIP-switch
- Suitable for emergency lighting acc. to EN 50172
- EOfi=100%
- 5 years warranty
- Surge: 2kV
- Tc: 85°C



Model	Item NO.	Power	Input Voltage	Output Current	Output Voltage	Efficiency	Power Factor	Size (L*W*H)
ITS FIX 20/220-240/350 N CS L CCT	61204079	20W	220-240VAC	200-350mA	25-100V	90%	0.9	168*30*21mm
ITS FIX 40/220-240/350 N CS L CCT	61204089	40W	220-240VAC	200-350mA	40-200V	94%	0.95	168*30*21mm
ITS FIX 60/220-240/350 N CS L CCT	61204099	60W	220-240VAC	200-350mA	90-200V	94%	0.95	210*30*21mm
ITS FIX 80/220-240/550 N CS L CCT	61204109	80W	220-240VAC	200-550mA	90-216V	95%	0.95	210*30*21mm

ITS FIX CV Series

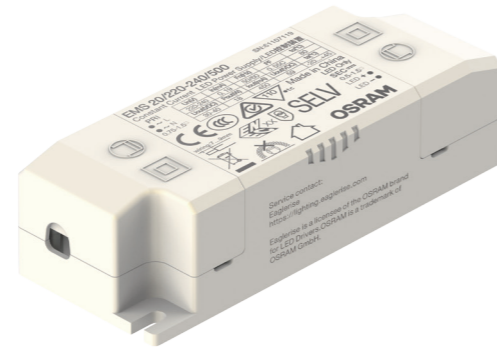
- For luminaire of protection class I or II
- Isolated / SELV / Independent
- Input Voltage 220-240 VAC
- Protections: SCP/ OLP/ OVP/ OTP
- Power Factor 0.95
- Efficiency up to 93%
- Suitable for emergency lighting acc. to EN 50172
- EOfi=100%
- 5 years warranty
- Surge: 2kV
- Ta: 50°C



Model	Item NO.	Power	Input Voltage	Output Current	Output Voltage	Efficiency	Power Factor	Size (L*W*H)
ITS FIX 30/220-240/12	62105019	30W	220-240VAC	0-2.5A	12V	85%	0.95	168*39*28mm
ITS FIX 30/220-240/24	62105029	30W	220-240VAC	0-1.25A	24V	85%	0.95	168*39*28mm
ITS FIX 60/220-240/12	62105039	60W	220-240VAC	0-5A	12V	89%	0.95	200*39*30mm
ITS FIX 60/220-240/24	62105049	60W	220-240VAC	0-2.5A	24V	89%	0.95	200*39*30mm
ITS FIX 120/220-240/12	62105059	120W	220-240VAC	0-10A	12V	91%	0.95	259*39*30mm
ITS FIX 120/220-240/24	62105069	120W	220-240VAC	0-5A	24V	93%	0.95	259*39*30mm
ITS FIX 180/220-240/24	62105079	180W	220-240VAC	0-7.5A	24V	93%	0.95	350*45*30mm
ITS FIX 250/220-240/24	62105089	250W	220-240VAC	0-10.416A	24V	93%	0.95	350*45*30mm

EMS High PF Series

- For luminaire of protection class I or II
- Isolated / SELV / Independent
- Input Voltage 220-240 VAC
- Protections: SCP/ OLP/ OVP/ OTP
- Efficiency up to 90%
- 5 years warranty
- Ta: 50°C
- Surge: 2kV



Model	Item NO.	Power	Input Voltage	Output Current	Output Voltage	Efficiency	Power Factor	Size (L*W*H)
EMS 20/220-240/500	61106019	20W	220-240VAC	500mA	27-42V	87%	0.95	103*43*29mm
EMS 25/220-240/600	61106029	25W	220-240VAC	600mA	27-42V	87%	0.95	103*43*29mm
EMS 30/220-240/700	61106039	30W	220-240VAC	700mA	27-42V	87%	0.95	103*43*29mm
EMS 32/220-240/750	61106049	32W	220-240VAC	750mA	27-42V	87%	0.95	103*43*29mm
EMS 33/220-240/800	61106059	33W	220-240VAC	800mA	27-42V	89%	0.95	103*43*29mm
EMS 35/220-240/850	61106069	35W	220-240VAC	850mA	27-42V	89%	0.95	103*43*29mm
EMS 36/220-240/900	61106079	36W	220-240VAC	900mA	27-42V	89%	0.95	103*43*29mm
EMS 38/220-240/950	61106089	38W	220-240VAC	950mA	27-42V	89%	0.95	103*43*29mm
EMS 40/220-240/1000	61106099	40W	220-240VAC	1000mA	27-42V	89%	0.95	103*43*29mm
EMS 42/220-240/1050	61106109	42W	220-240VAC	1050mA	27-40V	90%	0.95	103*43*29mm

EMS LPF Series

- For luminaire of protection class II
- Isolated / SELV / Independent
- Input Voltage 220-240 VAC
- Protections: SCP/ OLP/ OVP/ OTP
- Efficiency up to 85%
- 5 years warranty
- Ta: 45°C
- Mini Size



35mm Aperture



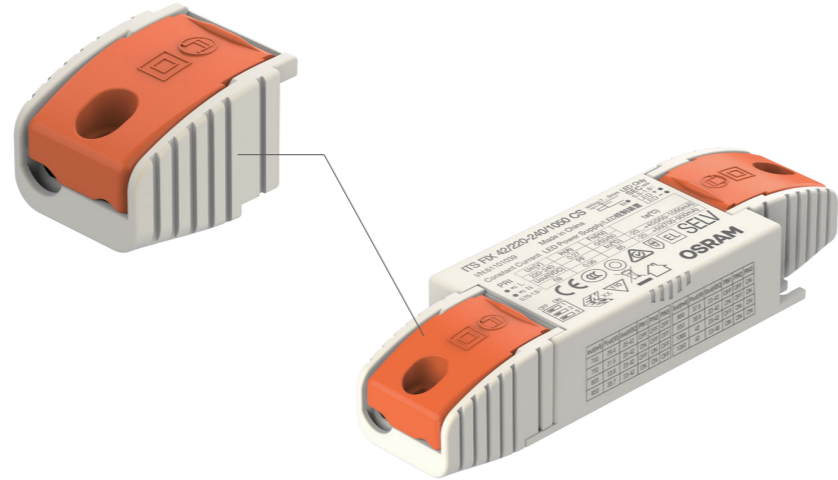
Model	Item NO.	Power	Input Voltage	Output Current	Output Voltage	Efficiency	Power Factor	Size (L*W*H)
EMS 5/220-240/120 LPF	61107029	5W	220-240VAC	120mA	30-40V	80%	0.6	92*28*21mm
EMS 6/220-240/150 LPF	61107039	6W	220-240VAC	150mA	30-40V	80%	0.6	92*28*21mm
EMS 7/220-240/180 LPF	61107049	7W	220-240VAC	180mA	30-40V	80%	0.6	92*28*21mm
EMS 8/220-240/200 LPF	61107059	8W	220-240VAC	200mA	30-40V	80%	0.6	92*28*21mm
EMS 9/220-240/220 LPF	61107069	9W	220-240VAC	220mA	30-40V	80%	0.6	92*28*21mm
EMS 10/220-240/250 LPF	61107079	10W	220-240VAC	250mA	30-40V	82%	0.6	92*28*21mm
EMS 11/220-240/280 LPF	61107089	11W	220-240VAC	280mA	30-40V	82%	0.6	92*28*21mm
EMS 12/220-240/300 LPF	61107099	12W	220-240VAC	300mA	30-40V	82%	0.6	92*28*21mm
EMS 15/220-240/350 LPF	61107109	15W	220-240VAC	350mA	30-40V	82%	0.6	92*28*21mm
EMS 18/220-240/450 LPF	61107119	18W	220-240VAC	450mA	30-40V	85%	0.55	92*36*25mm
EMS 20/220-240/500 LPF	61107129	20W	220-240VAC	500mA	30-40V	85%	0.55	92*36*25mm

Accessories

Side Cap

Suitable for:

- ITS DALI-2 20/220-240/500 CS
- ITS DALI-2 30/220-240/700 CS
- ITS DALI-2 42/220-240/1050 CS
- ITS DALI-2 60/220-240/1500 CS
- ITS FIX 20/220-240/500 CS
- ITS FIX 30/220-240/700 CS
- ITS FIX 42/220-240/1050 CS
- ITS FIX 60/220-240/1500 CS



Item NO.:
63101019

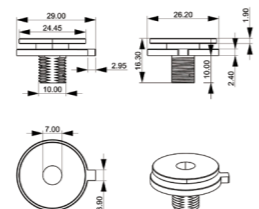
Nipple

Suitable for:

- ITS FIX 12/220-240/300 CS T-W HE
- ITS FIX 12/220-240/300 CS T-B HE
- ITS FIX 12/220-240/300 CS T-G HE
- ITS FIX 18/220-240/450 CS T-W HE
- ITS FIX 18/220-240/450 CS T-B HE
- ITS FIX 18/220-240/450 CS T-G HE
- ITS FIX 28/220-240/650 CS T-W HE
- ITS FIX 28/220-240/650 CS T-B HE
- ITS FIX 28/220-240/650 CS T-G HE
- ITS FIX 36/220-240/850 CS T-W HE
- ITS FIX 36/220-240/850 CS T-B HE
- ITS FIX 36/220-240/850 CS T-G HE
- ITS FIX 42/220-240/1050 CS T-W HE
- ITS FIX 42/220-240/1050 CS T-B HE
- ITS FIX 42/220-240/1050 CS T-G HE

Size	Item NO.
M10*10	63301019
M10*8	63301029

Item NO. 63301019



Item NO. 63301029

